

# FORUM OF THE SCIENCES

## THE NEW COMPLEMENTARY STUDIES

Information event  
on the reformed Complementary Studies from winter semester 2025/26

→ Complementary Studies team, July 2025

# FORUM OF THE SCIENCES

## THE NEW COMPLEMENTARY STUDIES PROGRAMME

- ✓ Why a reform at all?
- ✓ What does the new module structure look like? What can you expect in terms of content?
- ✓ What will change for you as a Bachelor's student? What transitional arrangements are there?
- ✓ What will remain? How can special formats be integrated into the new model?



# THE NEW COMPLEMENTARY STUDIES

## WHY? WHERE TO?

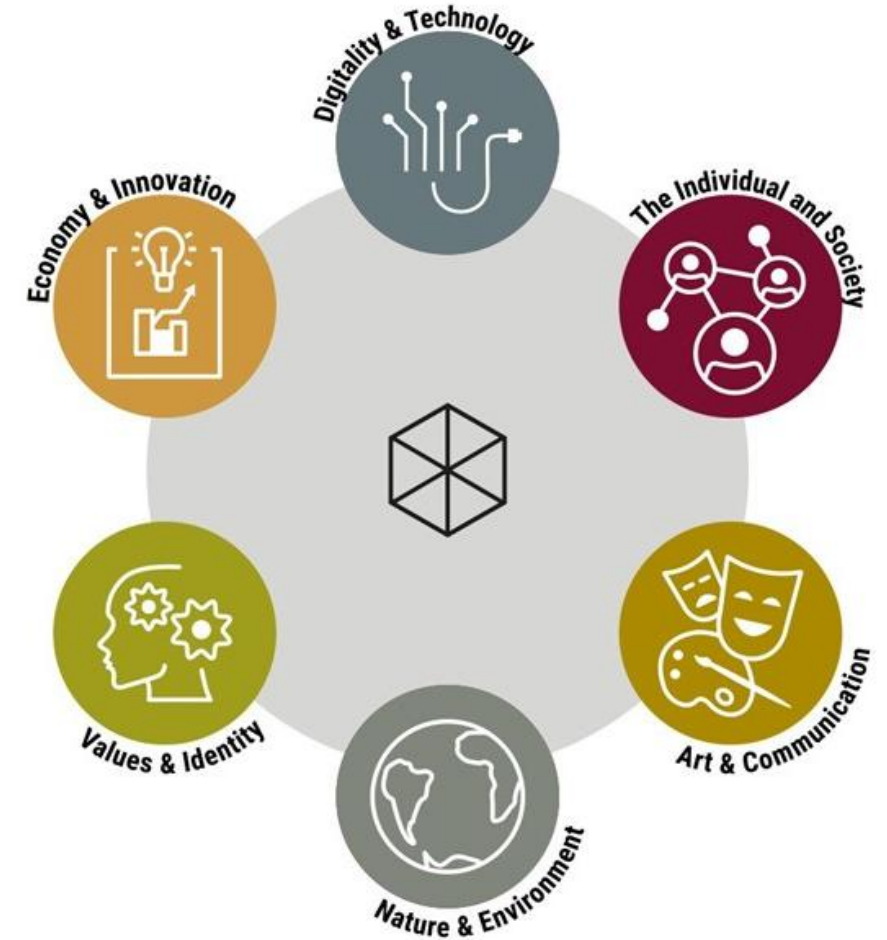
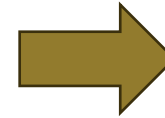
*University-wide dialogue and evaluation formats have defined the goals and requirements of restructuring*

- to make the **liberal education** programme and the **educational ideal** of Leuphana more visible
- to promote the **exchange between subjects and cultures of thought** more strongly
- to establish a more direct relationship between **university and society**
- to develop a **model that is easy to understand** for students and teachers alike
- to facilitate and expand **the acquisition of additional benefits** for students



# COMPLEMENTARY STUDIES BECOME A FORUM OF THE SCIENCES

		Perspektiven			
		Sozialwissenschaften	Geisteswissenschaften	Naturwissenschaften	Inter- und Transdisziplinäre Perspektive
Herangehensweisen	medialitäts-orientiert				
	methoden-orientiert				
	praxis-orientiert				









# THE NEW COMPLEMENTARY STUDIES MODULE STRUCTURE

The reformed complementary studies programme is designed around six major subject areas, which

- put diverse **scientific and social problem areas** into dialogue
- draw on the existing **teaching expertise** at Leuphana
- enable you to distinguish yourself in **different subjects and disciplines** (and their intersections)
- bring you together with **lecturers from all disciplines** and **students from all departments and semesters**



# EXTRACT OF THE MODULE DESCRIPTIONS

57001000 <b>DIGITALITY &amp; TECHNOLOGY</b> 	57002000 <b>THE INDIVIDUAL &amp; SOCIETY</b> 	57003000 <b>ART &amp; COMMUNICATION</b> 	57004000 <b>NATURE &amp; ENVIRONMENT</b> 	57005000 <b>VALUES &amp; IDENTITY</b> 	57006000 <b>ECONOMY &amp; INNOVATION</b> 
In this module, students address both analogue production technologies and aspects of automation as well as aspects of automation, machine learning or artificial intelligence associated with the digital transformation [...] artificial intelligence [...] and] the interaction between man and machine [...]	In this module, students examine [...] the structure and dynamics of social interactions of individuals and groups and their social systems, from [...] interpersonal relationships to formal cultural or political relationships and their institutionalisations [...]	In this module, students deal with practices, actors and contexts of expression, perception and of expression, perception and understanding, which include aesthetic and artistic forms as well as [...] ways and modes of information exchange.	In this module, students explore the phenomena, processes and systems of the animate and inanimate environment [...] and] the complexity of human-nature and human-environment relationship.	In this module, students explore what makes a person who they are. They examine the formation of values and identities on an individual and collective level [...] and the emotional, material, institutional and social concomitants [...]	In this module, students consider structures and practices of economic activity [...] from the local to the global level [...], economic and corporate history and futurology [...] and] experiences of working environments within and outside the economic context.

Detailed module descriptions can be found in myStudy and the FSA!

[https://mystudy.leuphana.de/modulVerwalten/default?setLocale=en\\_GB](https://mystudy.leuphana.de/modulVerwalten/default?setLocale=en_GB) (WiSe 25/26)

[https://www.leuphana.de/fileadmin/user\\_upload/Aktuell/files/Gazetten/Gazette\\_2025\\_02\\_2025-01-20.pdf](https://www.leuphana.de/fileadmin/user_upload/Aktuell/files/Gazetten/Gazette_2025_02_2025-01-20.pdf)



# THE NEW COMPLEMENTARY STUDIES ENROLMENT AND TRANSITION RULES

## What will change for you?

- **Each module** must be successfully **completed once** (*until 30 CP are reached → see opposite*)
- After 1st successful completion, each module can be **repeated once** to obtain additional credits (Zusatzleistungen)
- **Examinations** in all modules: Written Academic Performance Under Supervision *or* Combined Academic Performance
- **No longer compulsory** to attend a **foreign language course**

## ***Transitional regulations***

If you started your studies **before winter semester 2025/26**, you can **freely choose** from the **new modules** - subject to the new enrolment rules - in order to complete the **missing credit points** for the Complementary Studies



# THE NEW COMPLEMENTARY STUDIES ADDITIONAL CREDITS

## Additional achievements according to § 13 5 RPO

- **Each module** of the complementary studies programme can be **repeated once** as an additional achievement
- if **places** are **available** in the respective module and they have already successfully **completed** this module **as a compulsory module**.
- **When registering for examinations**, students must indicate that the module in question is to be recognised as an additional module.

➤ **Subsequent reclassification is not possible!**

[https://www.leuphana.de/fileadmin/user\\_upload/Aktuell/files/Gazetten/Gazette\\_2025\\_02\\_2025-01-20.pdf](https://www.leuphana.de/fileadmin/user_upload/Aktuell/files/Gazetten/Gazette_2025_02_2025-01-20.pdf)





# Important! Select the correct curriculum context!

Correct selection  
for first-time  
enrolment



Select curriculum context\*

Select curriculum context

## REGISTRATION WITH CURRICULUM ELEMENT

- ☒ [BS Leu UMW] B.Sc. Leuphana Bachelor Environmental Sciences
- ☐ [BS Leu UMWI] Leuphana Bachelor
- ☒ [50#KS\_LP] Complementary Studies
- ☐ [21703000\_LP] Mediality-oriented approaches to humanities
- ☐ [21703000\_LP] Mediality-oriented approaches to humanities
- ☐ [70#ZL\_LP/LA] Additional Credits
- ☐ [70#KS\_ZL] Complementary Modules
- ☐ [21703000\_LP] Mediality-oriented approaches to humanities
- ☐ [21703000\_LP] Mediality-oriented approaches to humanities



Correct selection for repetition as "additional work" Attention!  
With this selection, the grade and CP are not counted toward  
your degree! You cannot change the assignment at a later  
date!

[https://anleitungen-mycampus.leuphana.de/doku.php?id=ueberpruefung\\_studienplankontext](https://anleitungen-mycampus.leuphana.de/doku.php?id=ueberpruefung_studienplankontext)



# THE NEW COMPLEMENTARY STUDIES

## WHAT REMAINS?

Leuphana Bachelor's students must earn **30 CP** in the **Complementary Studies** programme\*

- With the **Basisprogramm Praxisphase** (German only!) it is still possible to complete an **internship** as part of the Complementary Studies
- It is still possible to acquire the **Gender Diversity Certificate** (GDZ) in the Complementary Studies
- **Teacher training students** can continue to complete their **Sozial- und Betriebspraktikum** (SBP) as part of the Complementary Studies

\* Different regulations apply for study programmes with **Lehramt option**



# THE NEW COMPLEMENTARY STUDIES SPECIAL FORMATS

For all special formats: **forward-looking study planning remains essential**

- **Basisprogramm Praxisphase:** Business & Innovation module (offered every semester)
- **GDZ basic courses:** Business & Innovation module (winter semester) and Individual & Society module
- **Courses suitable for SBP** (Lehramt) are indicated by the suffix (SBP) in the course title

**!** Corresponding modules must be kept free - otherwise only recognisable as Additional Credits



# THE NEW COMPLEMENTARY STUDIES

## FURTHER INFORMATION ONLINE

**New version of the FSA complementary studies from 20 January 2025:**

[https://www.leuphana.de/fileadmin/user\\_upload/Aktuell/files/Gazetten/Gazette\\_2025\\_02\\_2025-01-20.pdf#page=2](https://www.leuphana.de/fileadmin/user_upload/Aktuell/files/Gazetten/Gazette_2025_02_2025-01-20.pdf#page=2)

**Brief overview of the model, modules and enrolment rules:**

<https://www.leuphana.de/college/studium/ks.html> (German only)

<https://www.leuphana.de/en/college/study-program/complementary-studies-programme.html>



# CONTACT PERSONS AT THE COLLEGE

## COMPLEMENTARY STUDIES TEAM



**Astrid Becker, M.A.**



**Dr. Felix Lösing**



**Apl. Prof. Dr Maik Adomßent**

**Paul Ahlers / Eva  
Maria Wasserfuhr /  
Finja Mewis /  
Melina Gavaliatsi**  
Student assistants

Universitätsallee 1 | 21335 Lüneburg | Building 8, Room 121  
Phone 04131.677-237 | [komplementaerstudium@leuphana.de](mailto:komplementaerstudium@leuphana.de)

## ADMINISTRATION



**Dirk Schulze**  
Universitätsallee 1, C8.106  
21335 Lüneburg  
04131-677.1515  
[dirk.schulze@leuphana.de](mailto:dirk.schulze@leuphana.de)

**Sybille Pöppel**  
Universitätsallee 1, C8.118  
21335 Lüneburg  
04131-677-1401  
[sybille.poeppel@leuphana.de](mailto:sybille.poeppel@leuphana.de)

